



**HAL**  
open science

## How surface relief affects wettability and cell behavior on ultra-short laser-textured surfaces?

Ilemona S Omeje, Tatiana E Itina

### ► To cite this version:

Ilemona S Omeje, Tatiana E Itina. How surface relief affects wettability and cell behavior on ultra-short laser-textured surfaces?. V International Conference on Ultrafast Optical Science, Ultrafastlight, Moscow, Russia, October 2021, Oct 2021, Moscow, on-line, Russia. ujm-03829708

**HAL Id: ujm-03829708**

**<https://ujm.hal.science/ujm-03829708v1>**

Submitted on 25 Oct 2022

**HAL** is a multi-disciplinary open access archive for the deposit and dissemination of scientific research documents, whether they are published or not. The documents may come from teaching and research institutions in France or abroad, or from public or private research centers.

L'archive ouverte pluridisciplinaire **HAL**, est destinée au dépôt et à la diffusion de documents scientifiques de niveau recherche, publiés ou non, émanant des établissements d'enseignement et de recherche français ou étrangers, des laboratoires publics ou privés.

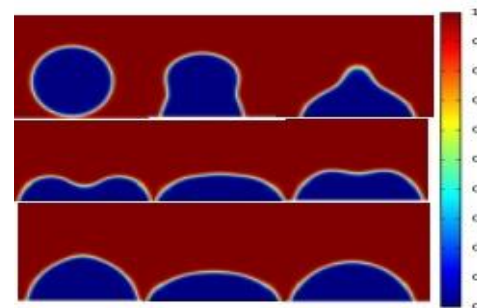


# How surface relief affects wettability and cell behavior on ultra-short laser-textured surfaces

Ilemona S. OMEJE and Tatiana E. ITINA,

*Laboratoire Hubert Curien, UMR 5516, Université Jean Monnet, Saint-Etienne, France*

\* [tatiana.itina@univ-st-etienne.fr](mailto:tatiana.itina@univ-st-etienne.fr)



# Cells on surfaces

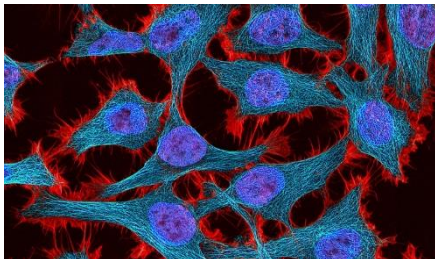
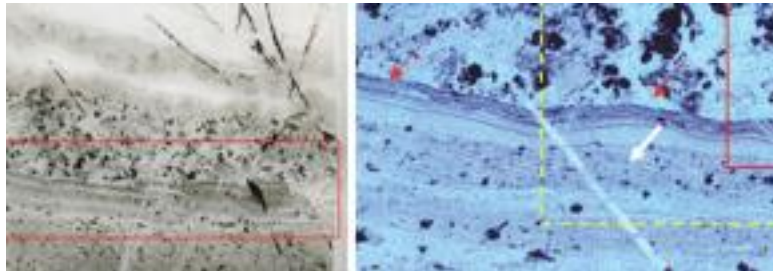
## On the origin of life: recent engineer's point of view



There are more and more new evidences that “first cells could have formed at **the surface of porous minerals**” ...

### HYDROTHERMAL-SEDIMENTARY ORIGIN OF LIFE

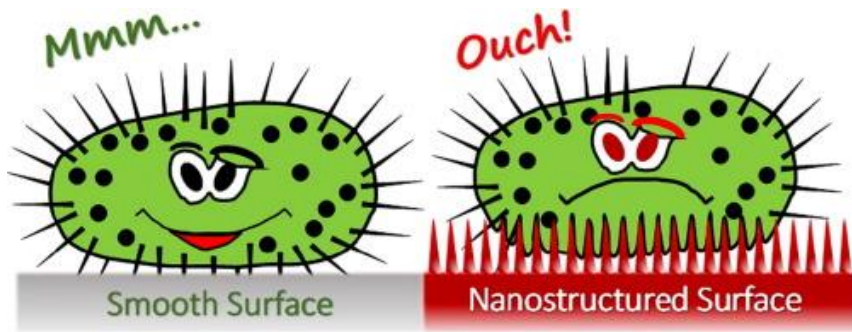
*Westall et al ASTROBIOLOGY V 18 (3) 2018*



“A primeval metabolism begins in water **at the surface of minerals...**”

*These promote the polymerization of some of the elementary building blocks, including RNAs. An RNA-metabolism world develops and leads to the replication of these RNAs, eventually forming an RNA-genome world which then uses RNA molecules as information templates (primitive genes) rather than as direct substrates for metabolism.*

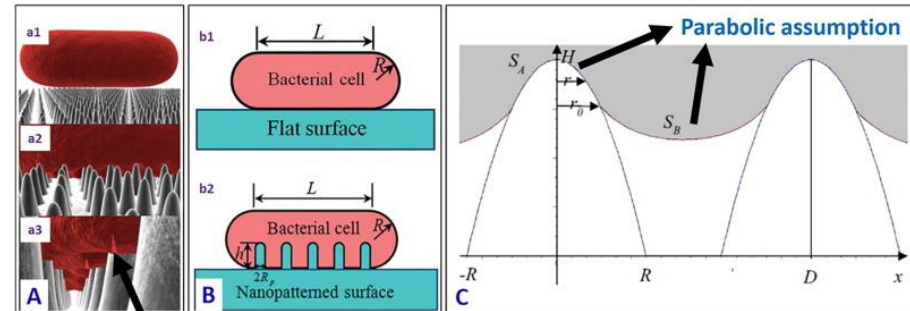
# Cells on surfaces



Between protection and defence ?

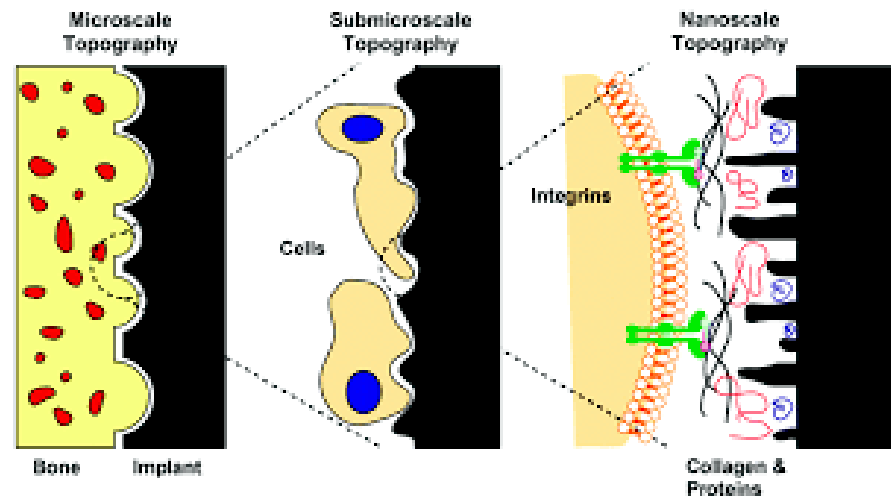
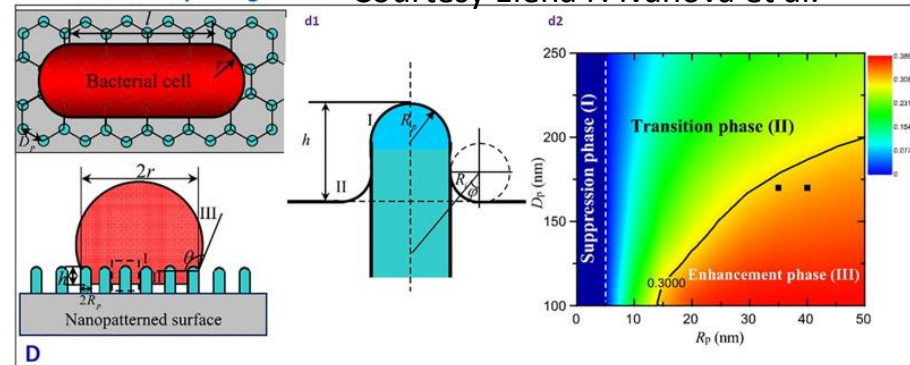
**Numerous factors can be important**

- cell types, size, properties
- surface material
- background gas or liquid
- surface topography
- topology
- Etc...

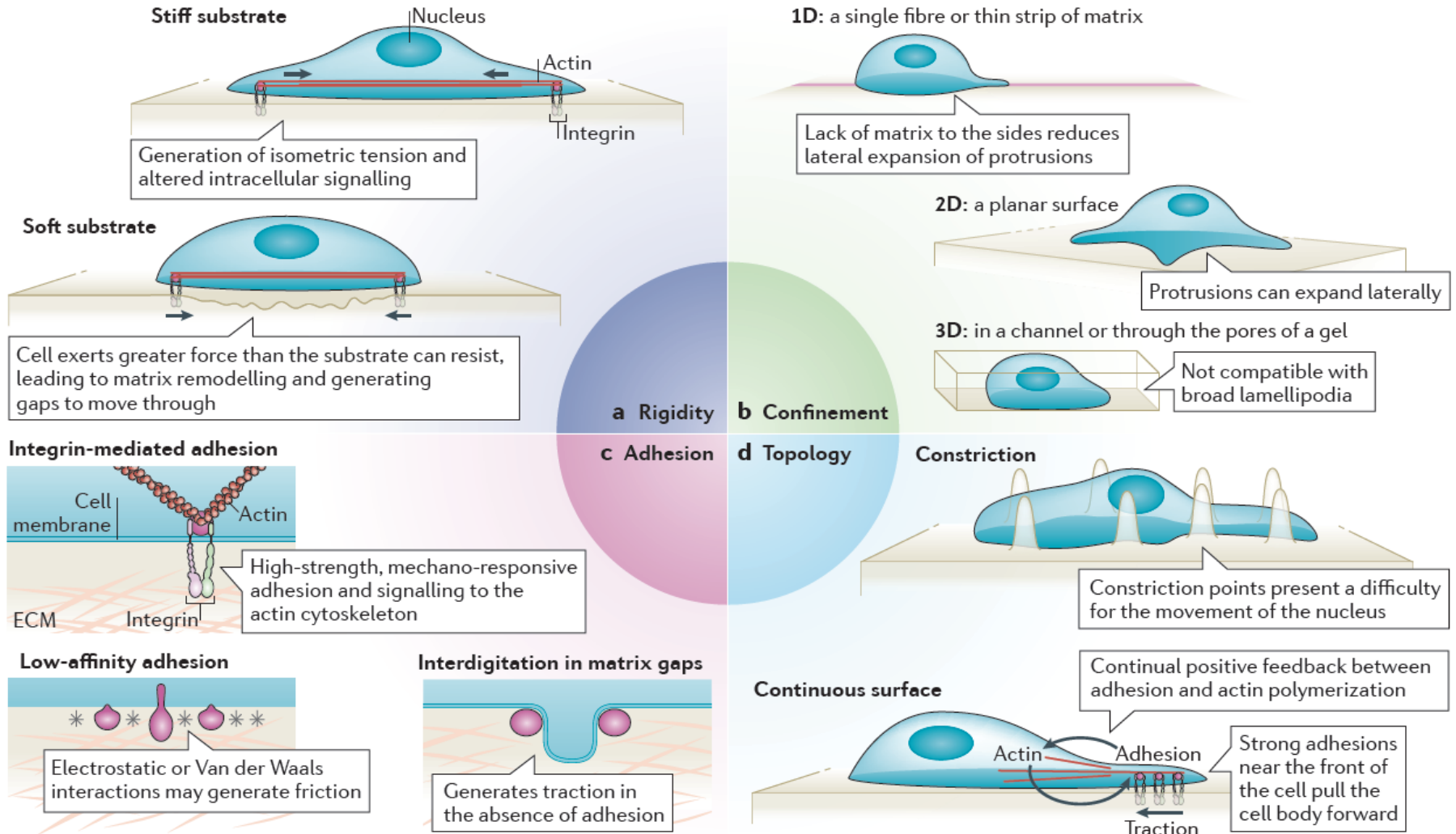


Cell wall rupturing

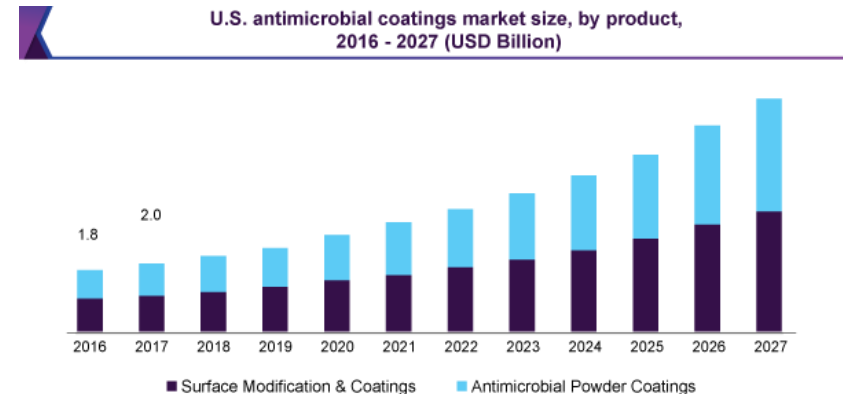
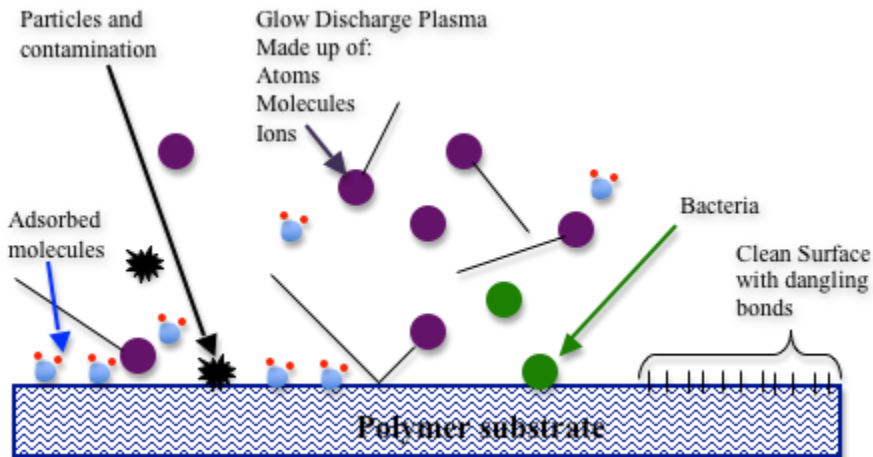
Courtesy Elena P. Ivanova et al.



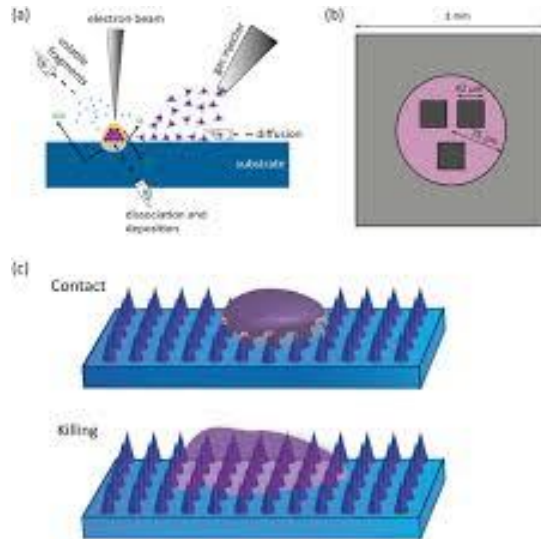
# Cells : physical influences



# Antimicrobial coatings vs surface texturing

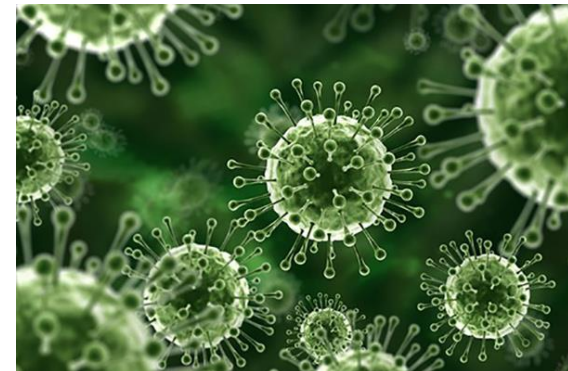


## Bio-inspired surface structures



## Microbes include:

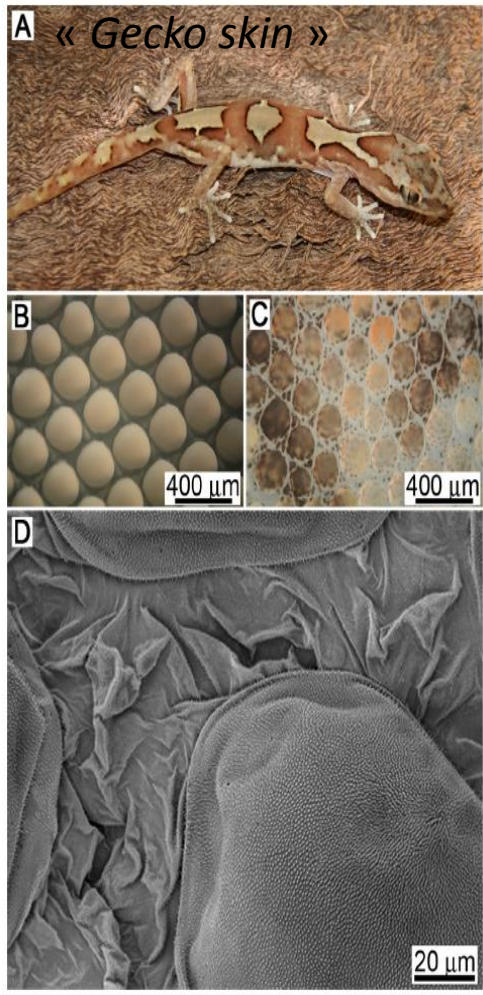
- fungi
- bacteria
- algae
- virus



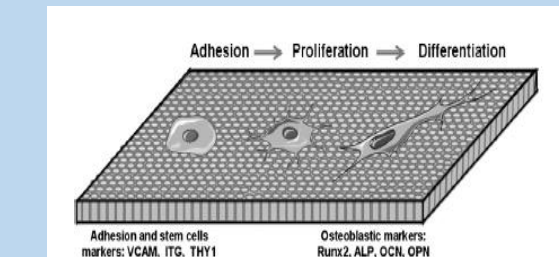
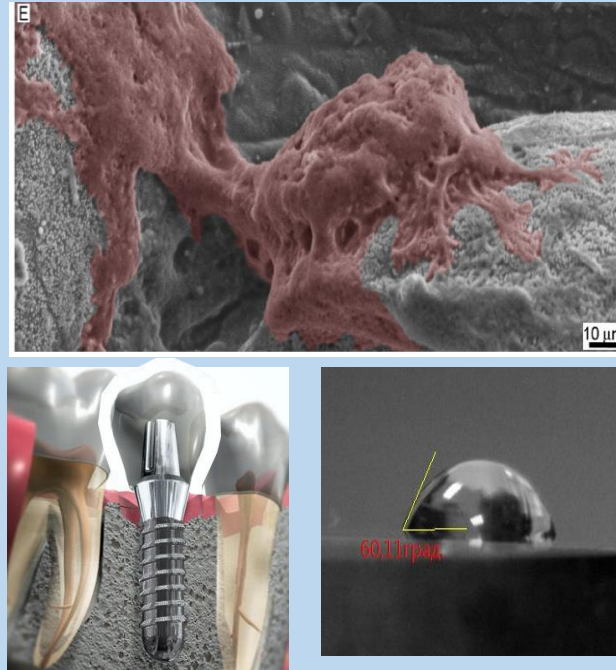
**Nature Helps: Toward Bioinspired Bactericidal Nanopatterns**

Mahya Ganjian et al, Advanced Materials, 06 June 2019

# Role of textured surfaces



G. S. Watson et al. « A gecko skin micro/nanostructure ... »  
*Acta Biomaterialia* 21 (2015), 109-122

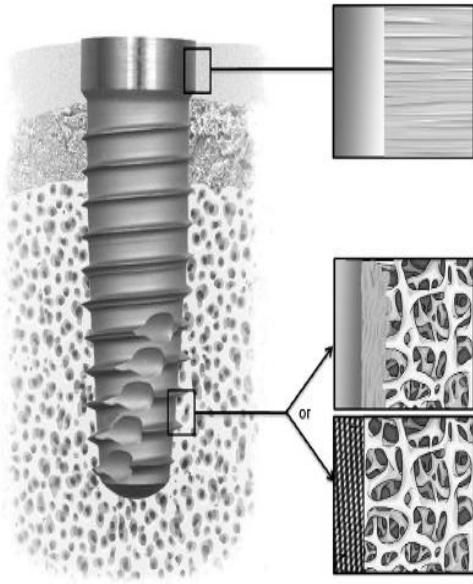


S. Lavenus et al., *Impact of nanotechnology on dental implants.*

- Analogy with **the gecko skin** - wetting control and adhesion properties
- The texturing of surfaces is **a key step toward better bio-integration** of prostheses, implants, scaffolds
- **Hydrophilic** surface promotes the interaction of the surface with cellular elements, which is of particular importance in the **early stages of osseointegration**

Yu. Karlagina et al.  
ITMO Univ.

# Dental implants: different parts - different treatment

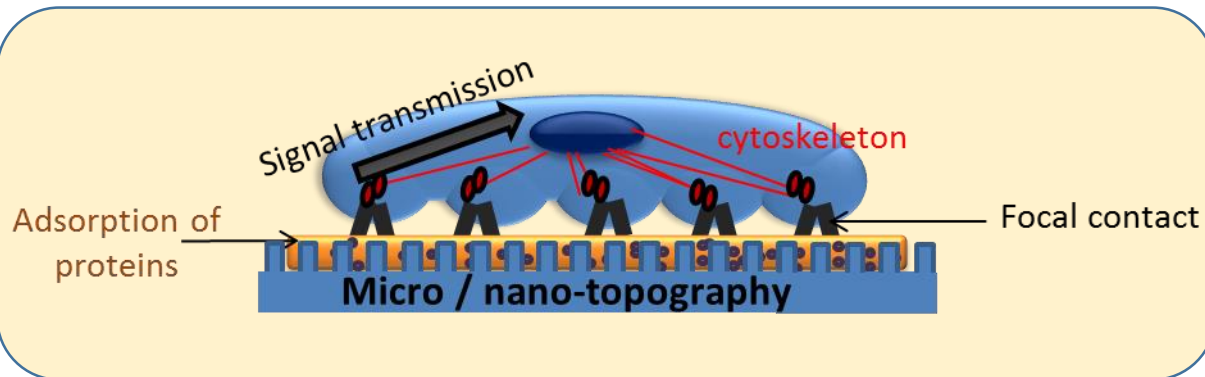


**In contact with the gingiva** – a texture allowing the development of gingival fibroblasts and limiting the adhesion of bacteria.

**In contact with the bone tissue** - should promote the differentiation and mineralization of bone cells to optimize osseointegration.

Here, we will concentrate on osseointegration

## Stem cells on textured surfaces

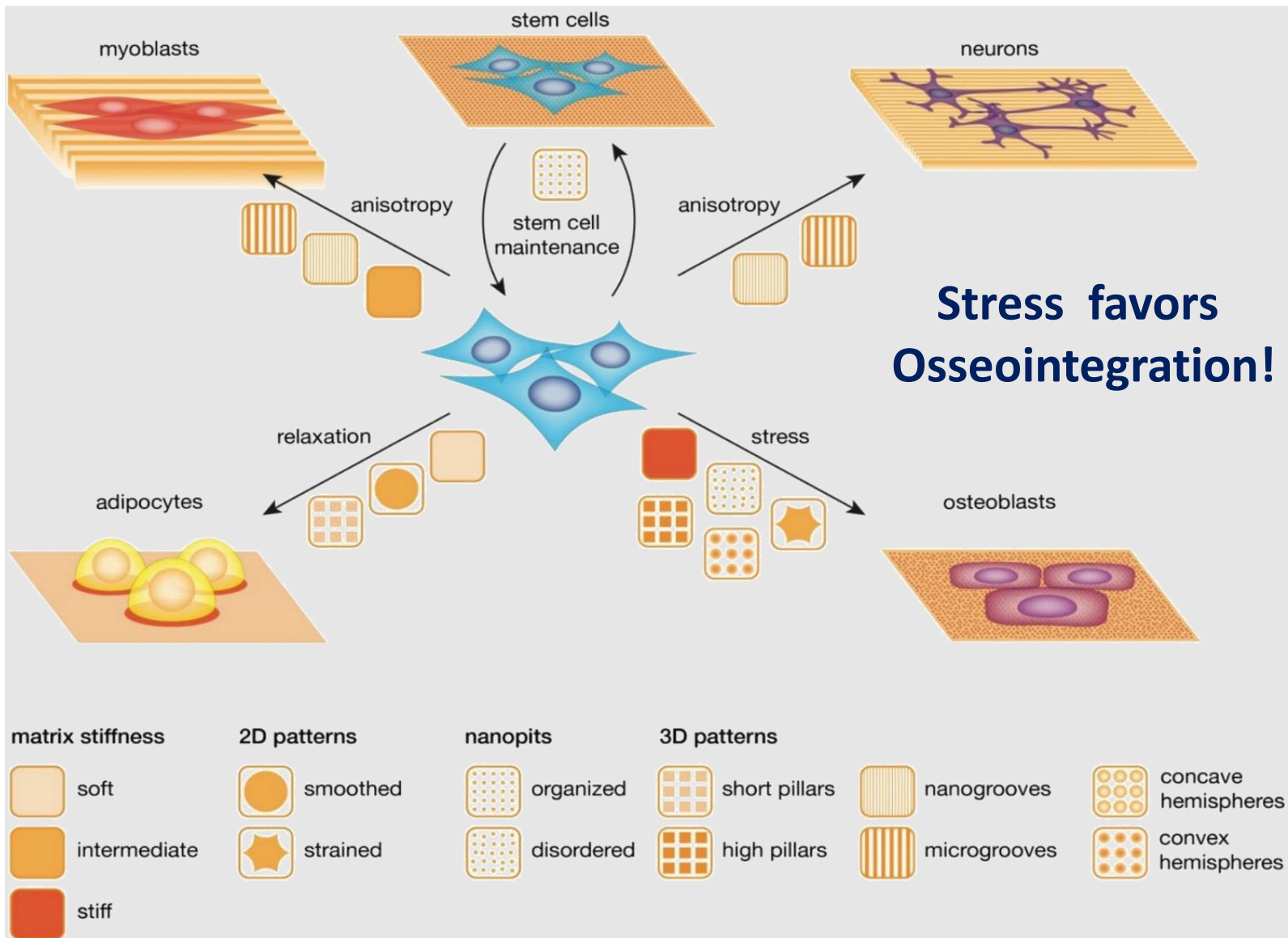


- Mechanotransduction
- Growth
- Osteoblast differentiation

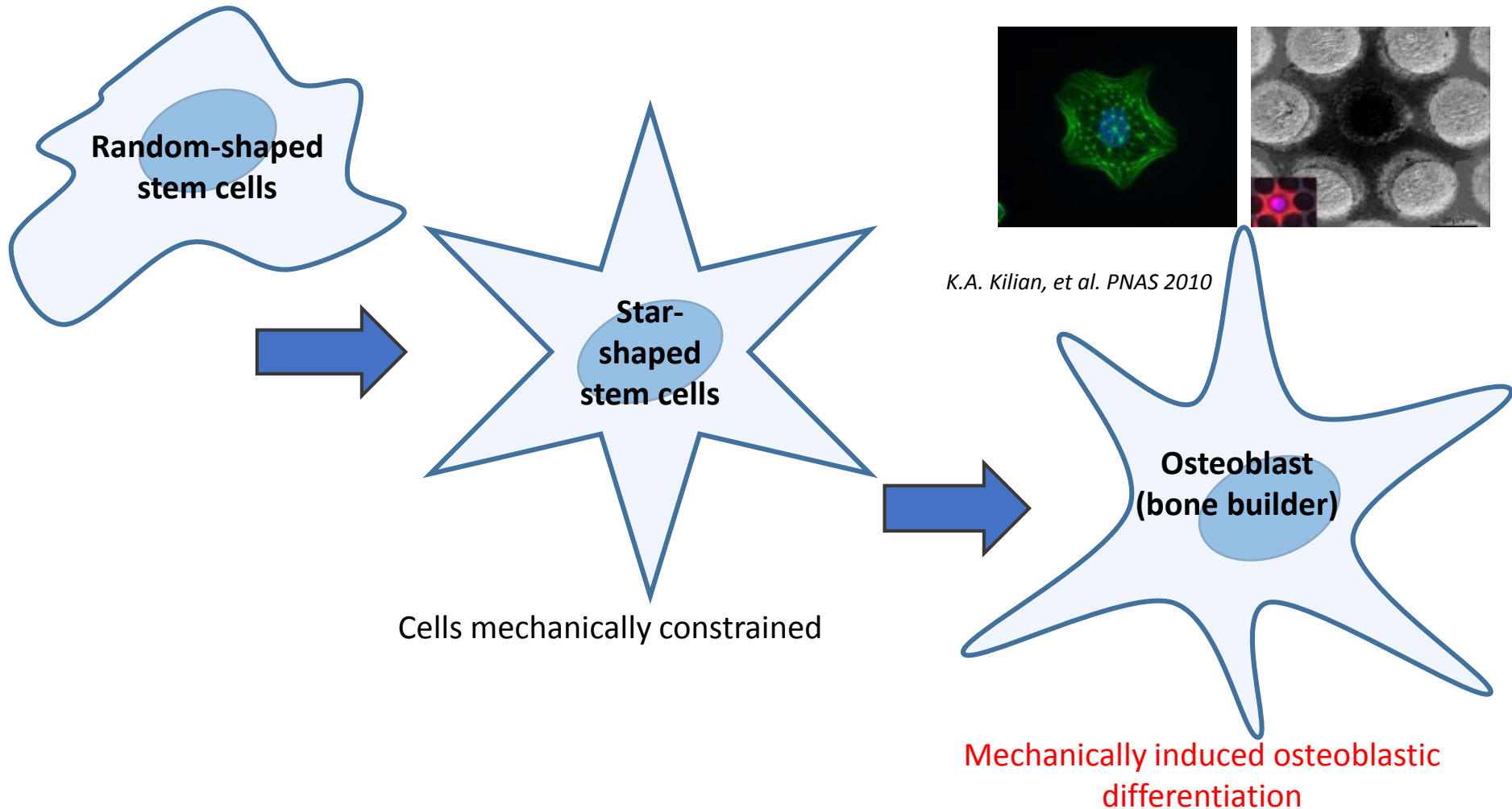


# Surface Modifications for Osteoblastic Differentiation

*K.A. Kilian et al., PNAS 2010*

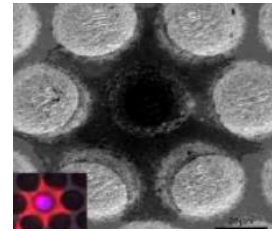
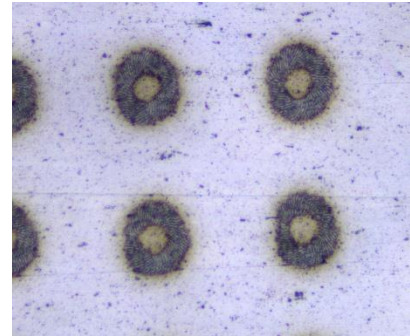
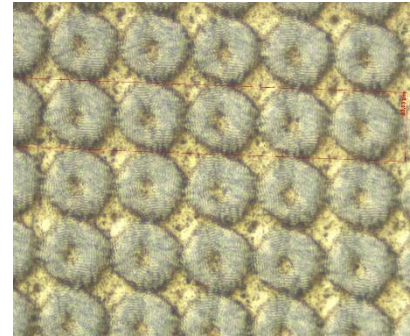
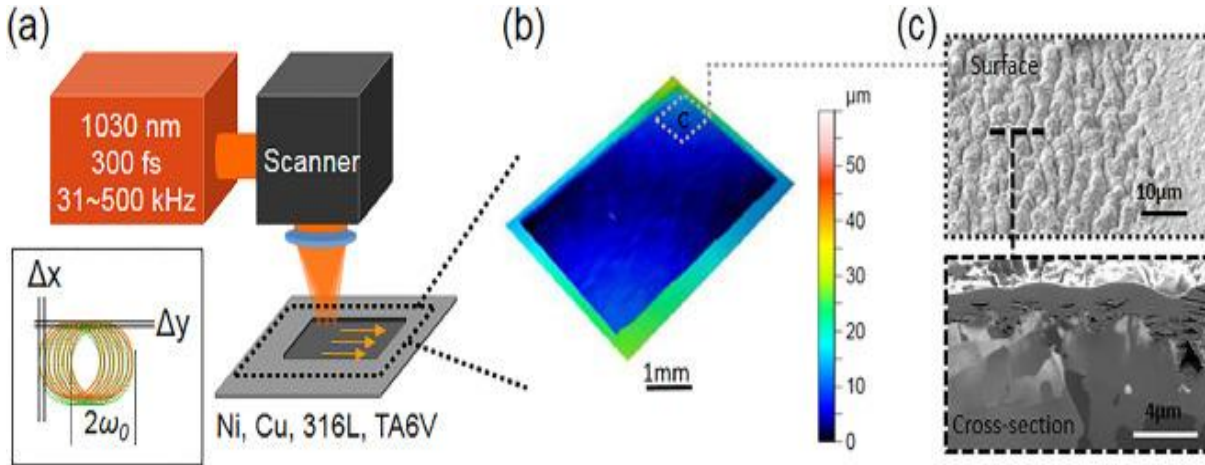


# Ways to get osteoblast differentiation



**We will try to guide cell to get a « star-like » extended shape to favor osseointegration.**

# Advantages of Femtosecond Lasers



- Can easily produce surface structures
- Can vary the size and the shape of the structures by reducing the thermal effect
- Favors a better control and a better quality
- Can minimize contamination and debris
- Can alternate hydrophobic and hydrophilic properties

**It remains to define the best surface relief, the optimum laser parameters.**

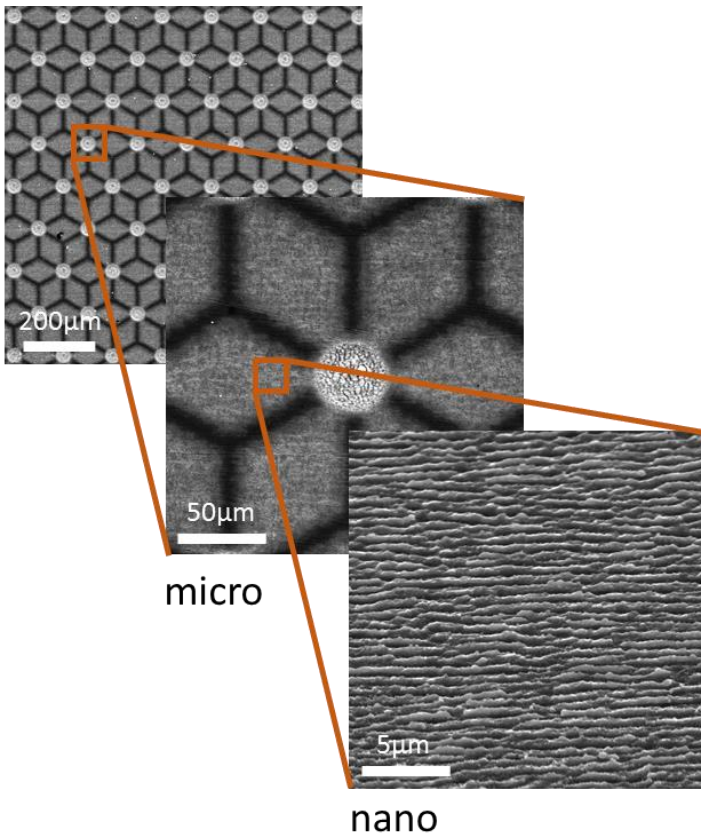
**For this, a better understanding of wetting on textured surfaces is required.**



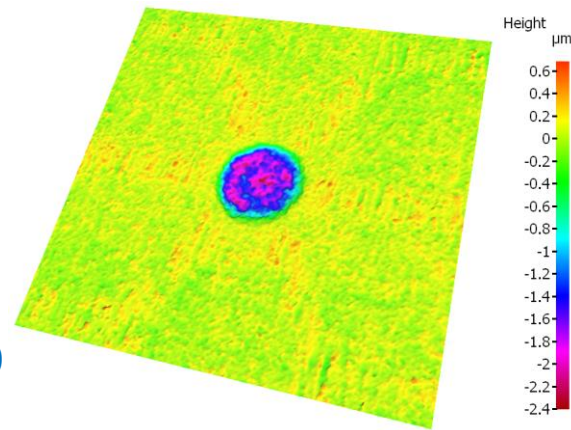
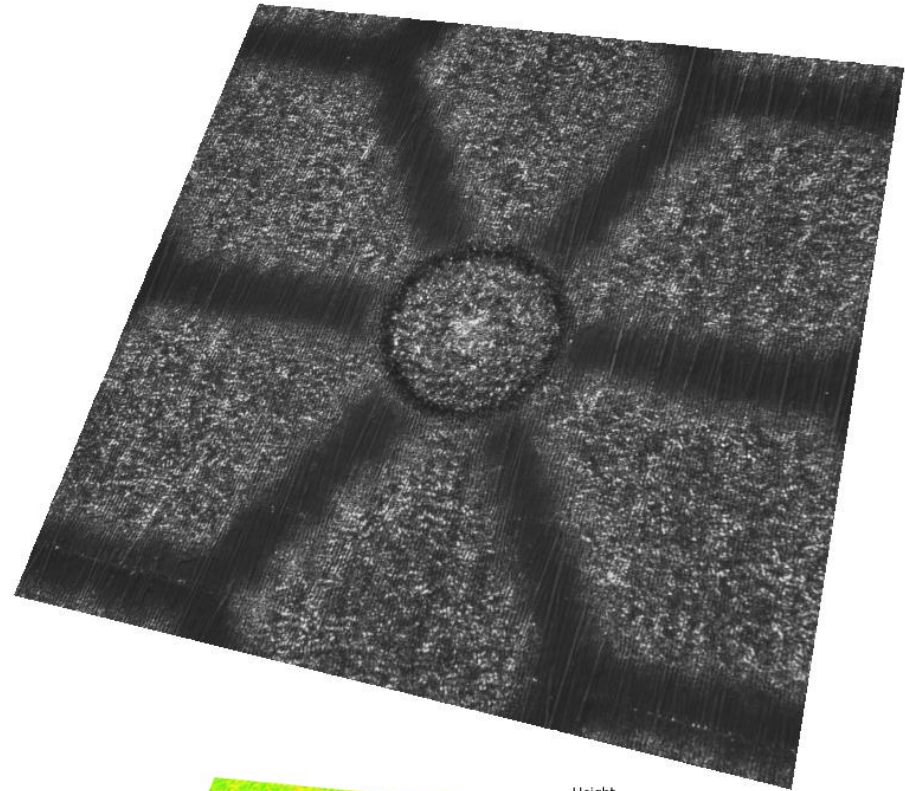
*X. Sedao et al. Optics and Lasers in Engineering*  
116, May 2019, Pages 68-74

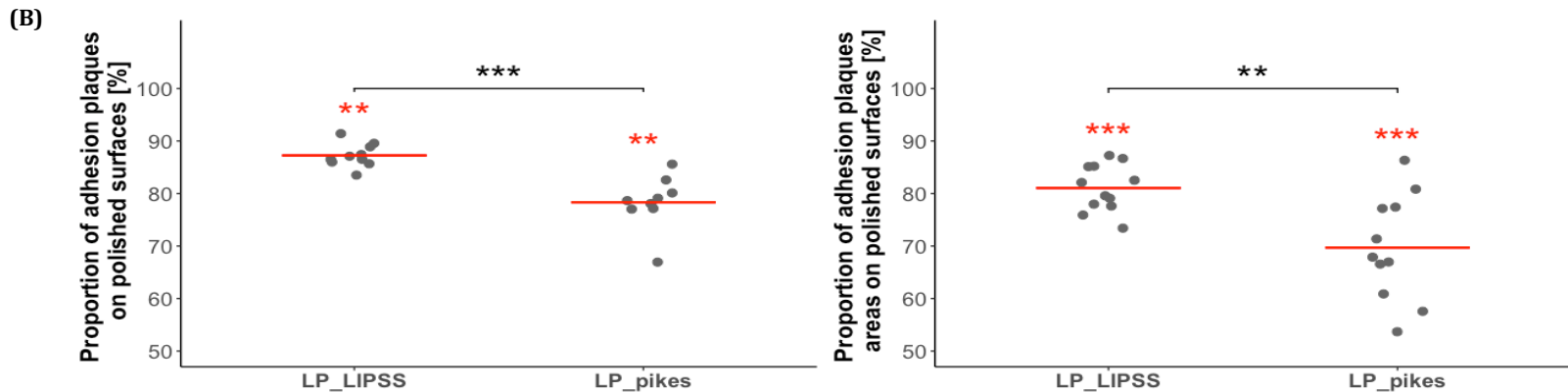
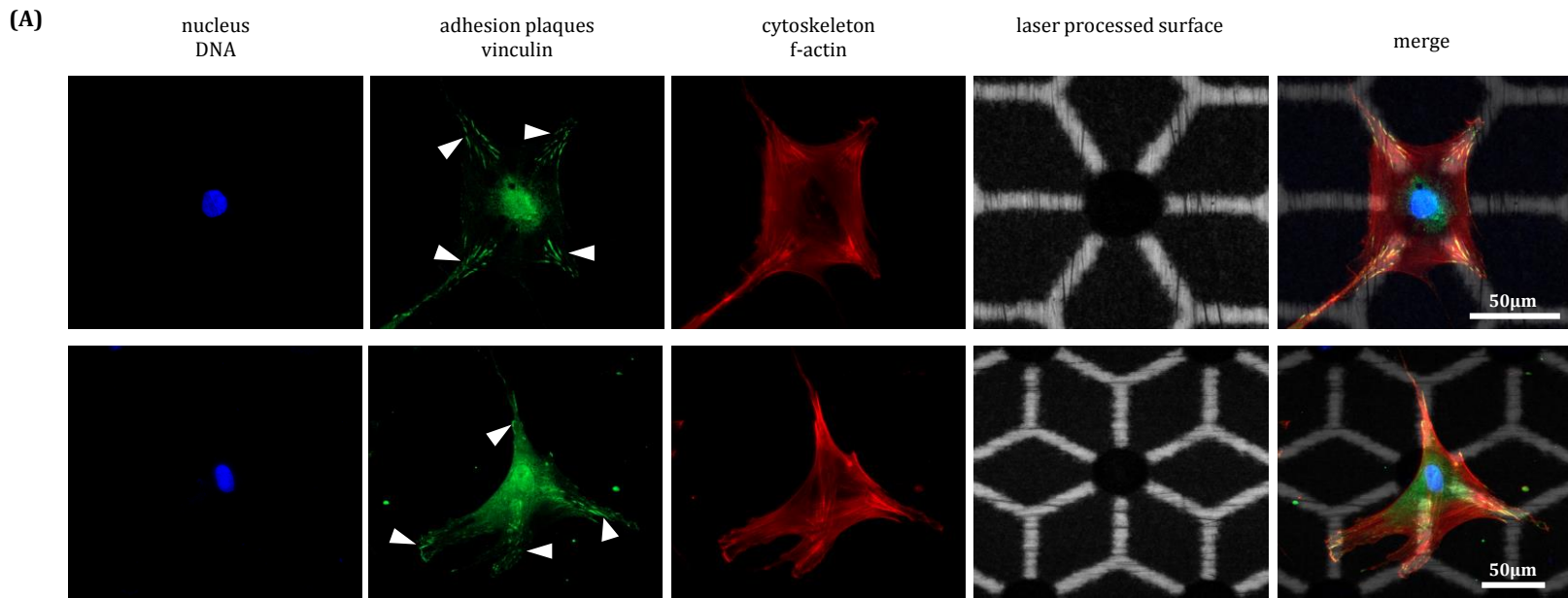
# Multi-scale Laser Patterning

## Hierarchical surface relief



**Knowledge-Based**





(A) hMSCs exhibits preferential focal adhesion location on polished areas (white arrows), nucleus inside a pit, and cytoskeleton star-like shaped. DNA is shown in blue, vinculin in green, actin in red.

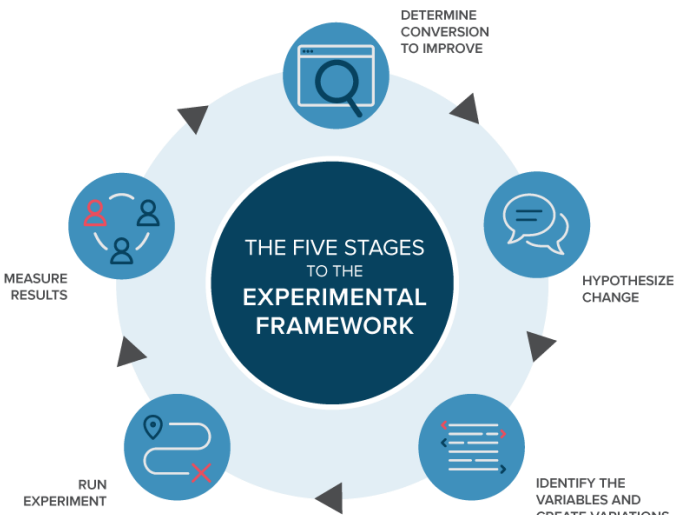
(B) Ratio of **adhesion plaques on polished regions** compared to **adhesion plaques on laser-nanostructured** ones was obtained either by counting the number of adhesion plaques per cell (left panel) or by measuring the areas of the adhesion plaques per cell (right panel). **Data shows a significant differences between LP\_LIPSS and LP\_spikes concerning the number and the area of adhesion plaques per cell. Red lines denote mean values.**

# How Modeling Can Help?



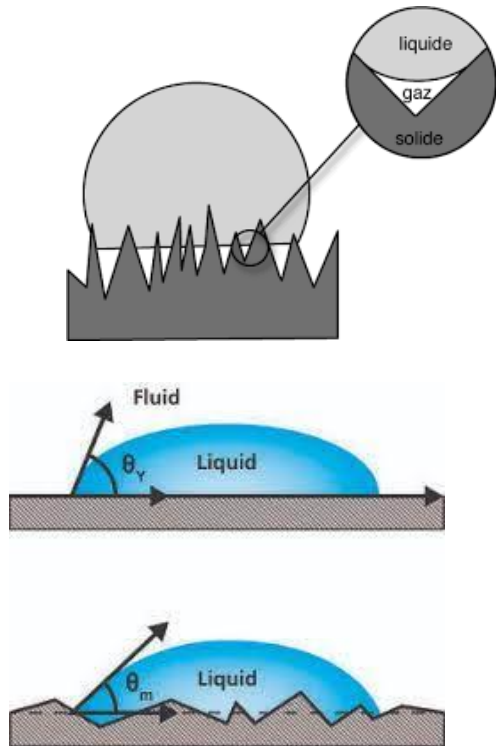
## Main objectives of the modeling

- to reduce the number of tests
- to optimize laser treatment



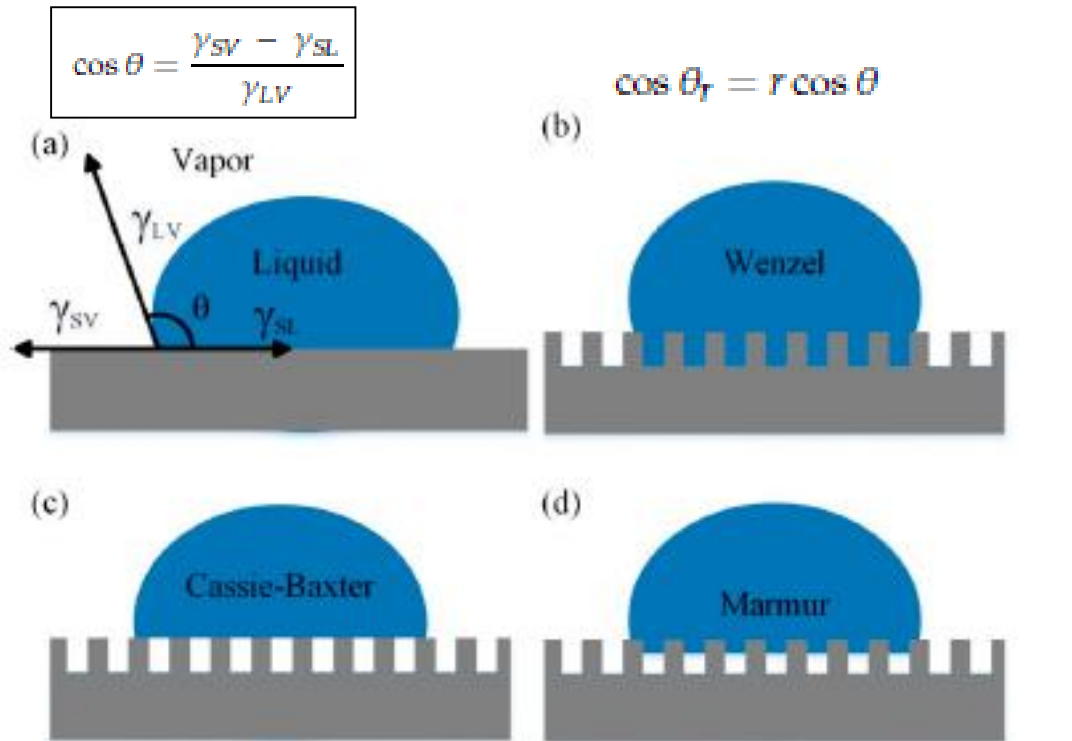
- To explain/predict the connections of cell/bacteria behavior with surface materials and relief
- To explain/predict the best materials and structure parameters for the required wettability
- To determine the best/required laser parameters

# Effects of surfaces roughness on wettability



Wettability changes with surface relief, with surface/liquid/gas compositions, with droplet size and...

**Wettability changes with ...time!**

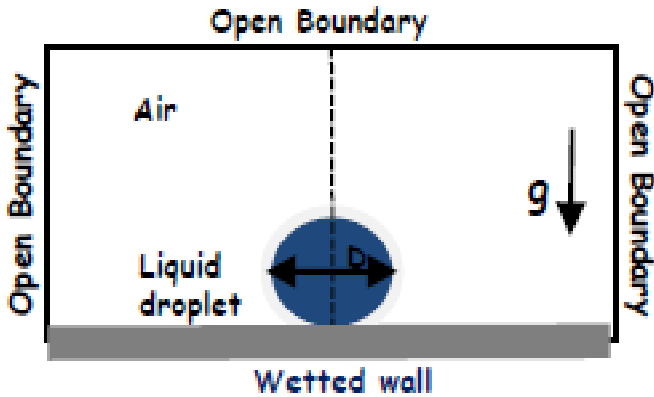


$$\cos \theta_r = f_{SL} \cos \theta_1 + f_{LA} \cos \theta_2$$

$$\cos \theta_r = r f_{SL} \cos \theta + f_{SL} - 1$$

The theories of wetting for a textured surface are often based on Cassi-Baxter and Wenzel models that are over 50 years old and are oversimplified.

# Computational Fluid-Dynamics CFD Model



## Level Set Method (Interface tracking)

$$\frac{\partial \phi}{\partial t} + \mathbf{u} \cdot \nabla \phi = \gamma \nabla (\epsilon_{ls} \nabla \phi - \phi(1 - \phi) \frac{\nabla \phi}{|\nabla \phi|})$$

$$\rho = \rho_1 + (\rho_2 - \rho_1)\phi$$

$$\mu = \mu_1 + (\mu_2 - \mu_1)\phi$$

## Kisler Model: Dynamic contact angle ( $\theta_d$ )

$$\theta_d = f_H [Ca + f_H^{-1}(\theta_e)]$$

$$f_H = \arccos \left\{ 1 - 2 \tanh \left[ 5.16 \left( \frac{x}{1 + 1.31x^{0.99}} \right)^{0.706} \right] \right\}$$

## Navier-Stokes (Fluid Flow)

$$\rho \frac{\partial \mathbf{u}}{\partial t} + \rho (\mathbf{u} \cdot \nabla) \mathbf{u} = \nabla \cdot [-P\mathbf{I} + \mathbf{K}] + \mathbf{F} + \rho \mathbf{g}$$

$$\rho \nabla \cdot \mathbf{u} = 0$$

$$\mathbf{K} = \mu (\nabla \mathbf{u} + (\nabla \mathbf{u})^T)$$

$$F_{st} = \sigma \delta \kappa n_{int} + \delta \nabla_s \sigma$$

$Ca = \frac{\mu U_{cl}}{\sigma}$  is Capillary number representing the relative effect of viscous drag forces versus surface tension forces acting across interface

$U_{cl}$  is contact-line velocity

S.F Kisler, Hydrodynamics of wetting, JC Berg (Ed.) Wettability, New York, 1993.

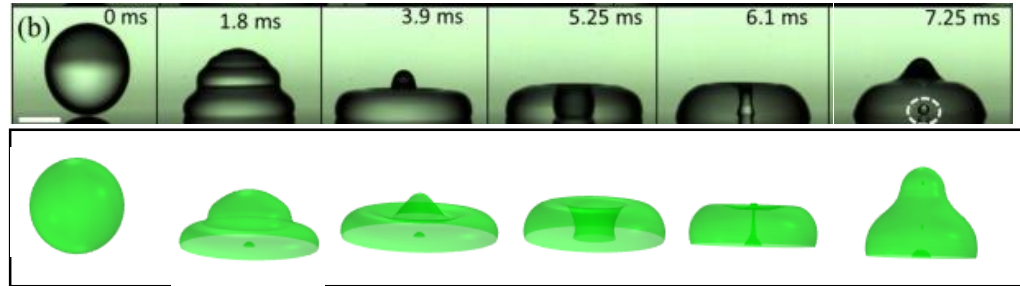


# Calculation Results: Model Validation

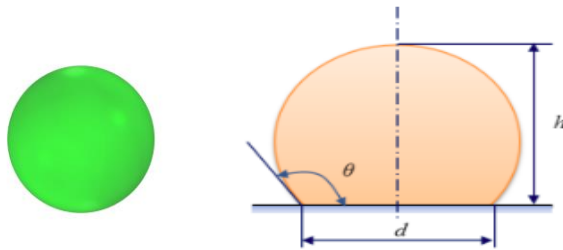
## Simulation of water droplet falling on glass

### Properties of Water and Air

Parameters	Value
Density of water	997 Kg/m <sup>3</sup>
Dyn. visc. of water	0.9 mPa.s
Density of air	1.204 Kg/m <sup>3</sup>
Dyn. visc. of air	1.814*10e-5
Surf. liq.-air	0.0718



Shiji et al (2018)

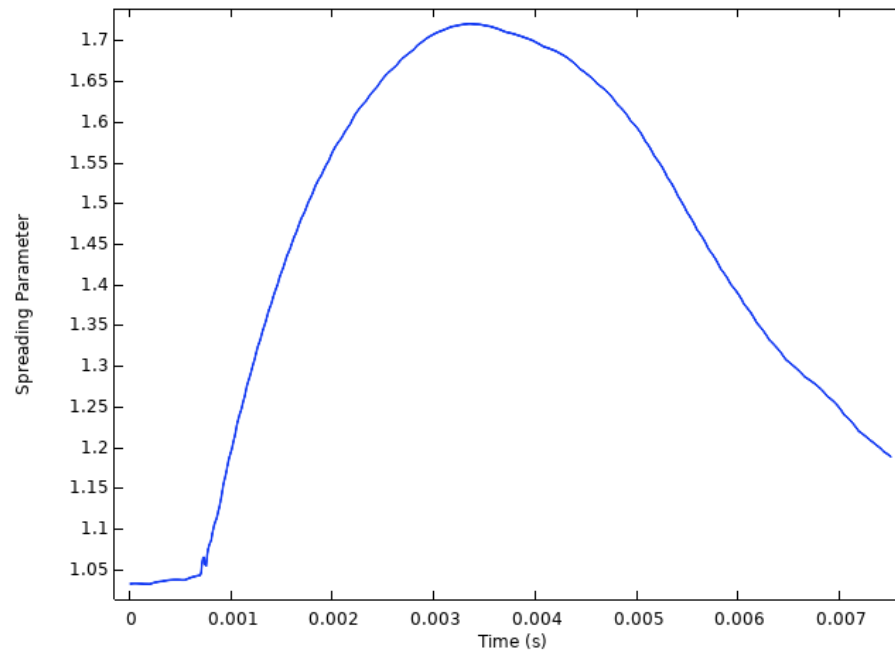


Diameter of droplet = 2 mm

Impact velocity = 0.56 m/s

Equili. Contact Angle = 106

### Spreading Parameter ( $d_s/d_0$ )

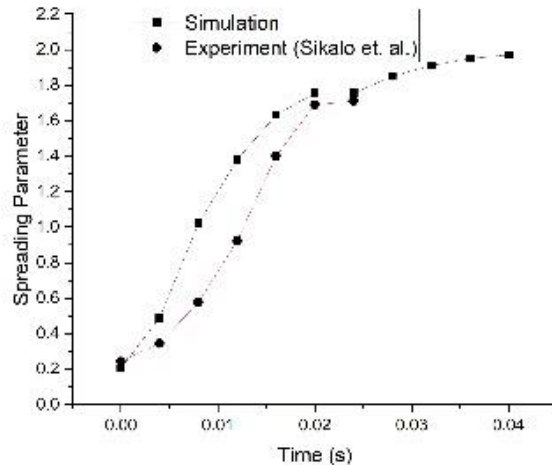


Shiji et al (2018), Impact of viscous on different wettability, Journal Colloid & Interface Science (Experiment)

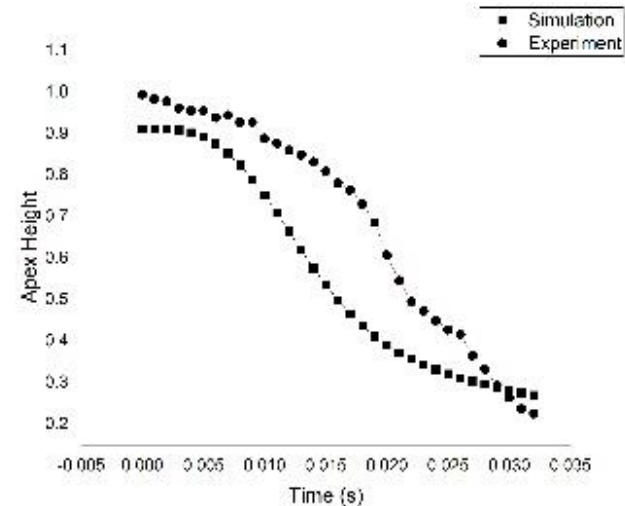
# CFD Results: Droplet Dynamics

## Glycerol Droplet Dynamics on wax: Experiment vs Simulation

$ds/dt$

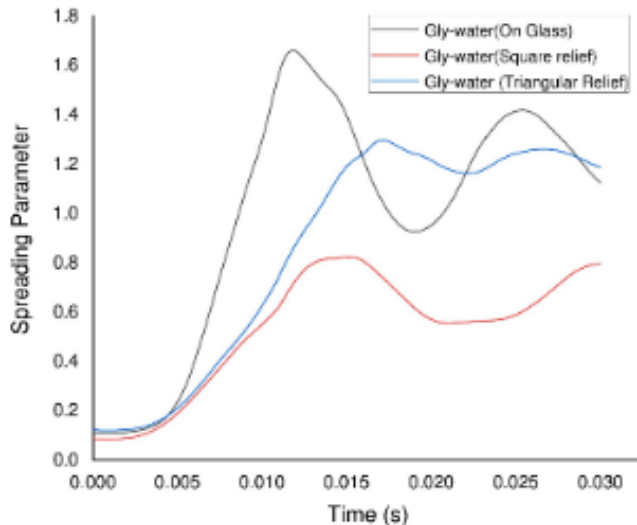


$dh/dt$



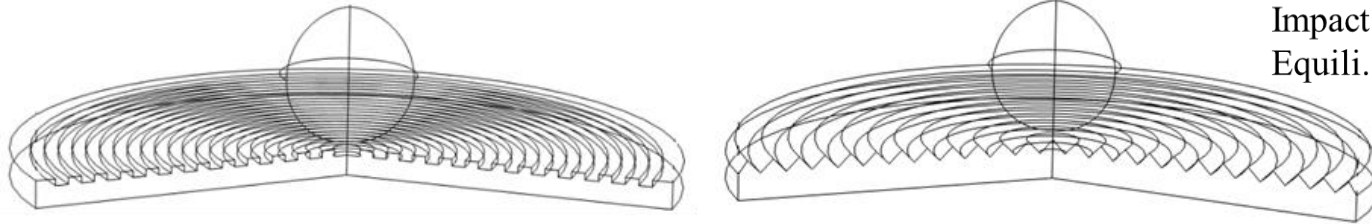
## Glycerol-Water Droplet dynamics on different textured surfaces

$ds/dt$



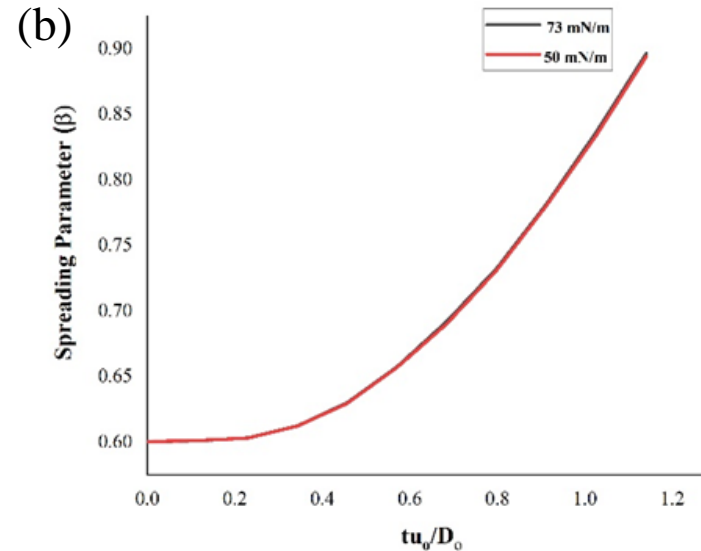
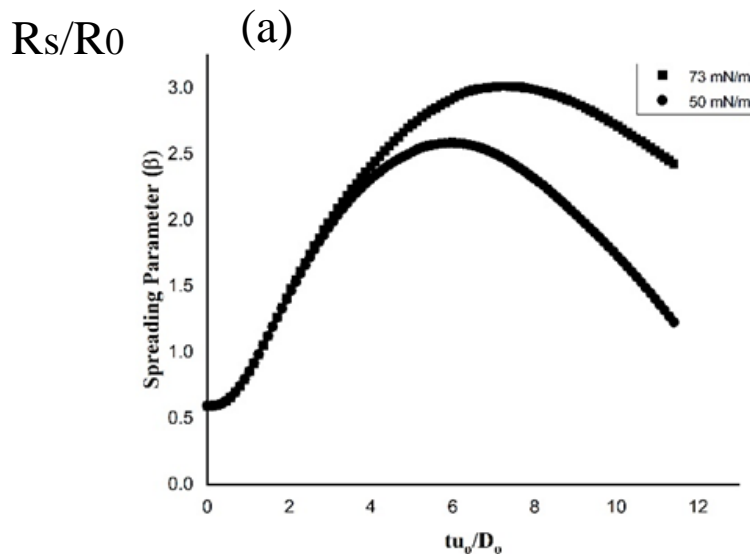
- Simulation results obtained for 2.45mm glycerin droplet on wax at a contact of  $15^\circ$  is compared with the experiments.
- The initial spreading process for the droplet is due to the impact pressure and inertia.
- The dynamics of the droplet on the textured surfaces is different. There is a great impingement of the liquid upon impact. This effect is due to the air pressure within the relief and the roughness of the surface. Oscillations are then observed.

# CFD Results: Effects of surface tension on plain and textured surfaces



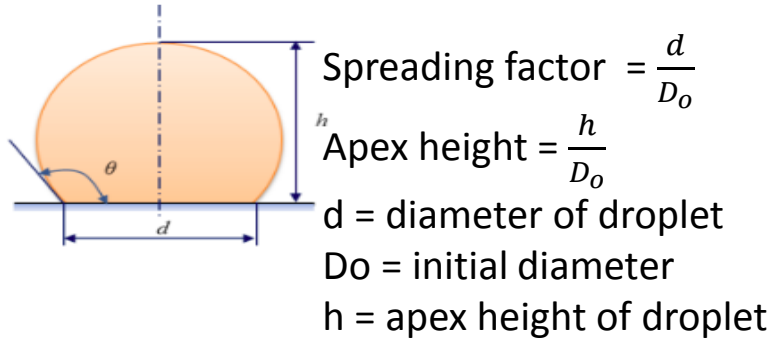
Diameter of droplet = 2 mm  
Impact velocity = 0.56 m/s  
Equili. Contact Angle = 106

Liquid droplet falls on the periodic rectangular and triangular relief



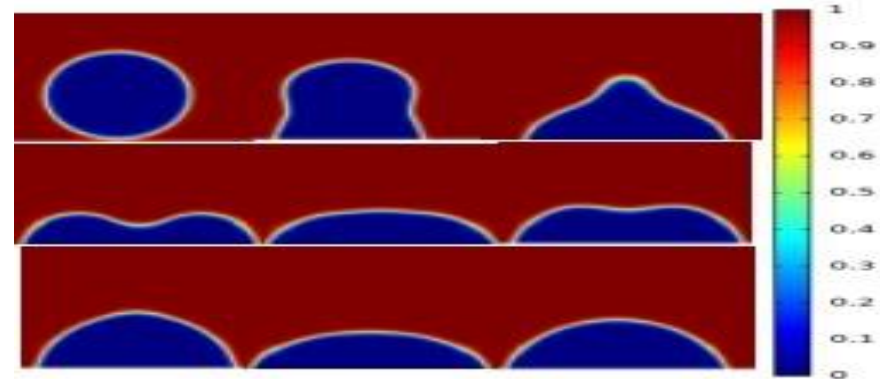
Spreading parameter on a plain (a) and on a triangular (b) Ti-6Al-4V surfaces at different surface tension.

# CFD results: role of the textured surface



diameter is 2mm  
 the static contact angle ( $\theta_e$ ) is  $76^\circ$   
 at impact velocity of 0.8 m/s

Glycerol-water droplet on glass

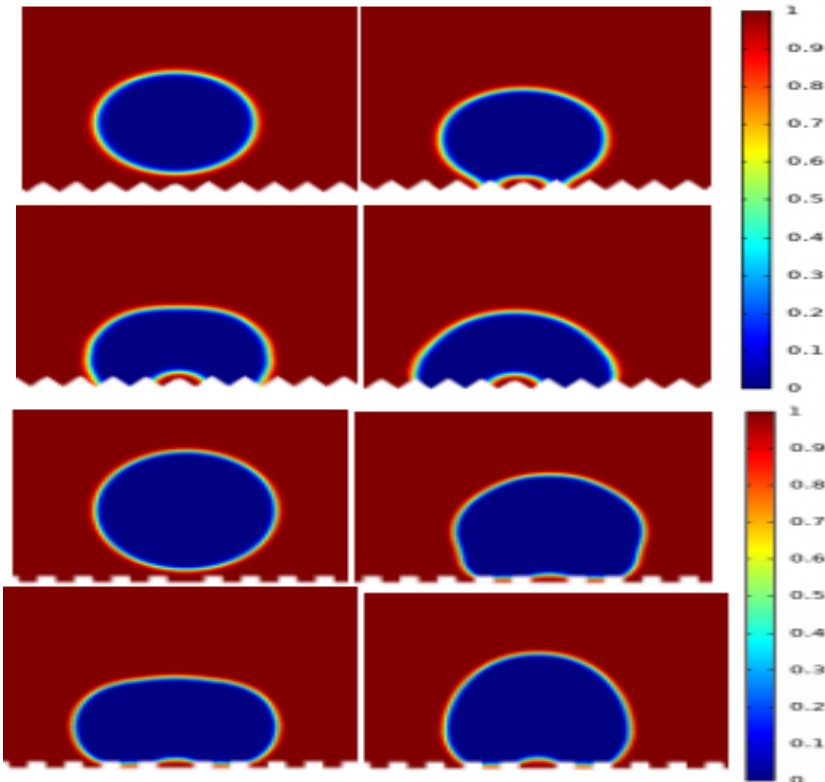


Glycerol-water droplet on triangular relief surface

Glycerol-water droplet on square relief surface

Parameters from:

Shiji L. et. al., Impact of viscous droplets on different wettable surfaces..., Journal of Colloid and Interface Science 516, 15 (2018), pp. 86-97.



## Summary

- **Femtosecond lasers** allow us the formation of complex surface reliefs.
- A connection between cell behavior and surface wettability has been established.
- Advanced laser processing solutions are promising for implants surface functionalization.
- **Surface relief, droplet size and impact velocity** play a role in wettability.
- **Spreading parameters such inertial, viscous, capillary and contact-line forces** strongly affect the dynamic contact angle and wetting.

**THANK YOU VERY MUCH FOR  
YOUR KIND ATTENTION!**